



THE MAY FAIR

A RADISSON COLLECTION HOTEL

MAKE IT MAYFAIR



THE MAY FAIR

A RADISSON COLLECTION HOTEL

[THE MAY FAIR](#)

[EVENTS SPACES](#)

[THEATRE](#)

[SOCIAL EVENTS](#)

[TECHNOLOGY](#)

[ROOM SPECIFICATIONS](#)

[CONTACT US](#)

A NATURAL CHOICE

Since 1927, The May Fair Hotel has been a place where people simply want to be. A desirable location. Exclusive event spaces for up to 370 guests. A private screening room and award-winning dining and drinking. What is there not to love?

A brilliant collision of versatility, character and inimitable service makes us the preferred choice for anything from financial roadshows to private celebrations. Guests from industries such as finance, technology and entertainment return to us, time and time again.





THE MAY FAIR

A RADISSON COLLECTION HOTEL

THE MAY FAIR

Rooms

EVENTS SPACES

Suites

THEATRE

Events Spaces

SOCIAL EVENTS

May Fair Kitchen

TECHNOLOGY

May Fair Bar

ROOM SPECIFICATIONS

May Fair Spa

CONTACT US

Location

ONCE UPON A TIME IN MAYFAIR...

Royal appointments. Revelry and escapism. Hollywood debauchery. The May Fair Hotel's unique character traces through a history verging on the fictional.

Following its inauguration in 1927 by King George V and Queen Mary, The May Fair Hotel became London society's playground. The young and affluent whirled around the ballroom alongside royalty. When the war came, the hotel continued to be an oasis of enjoyment where guests could forget the outside world.

During the fifties and sixties, few places were more swinging than The May Fair Hotel. Then owned by Hollywood's Danziger brothers, the hotel became a theatrical showpiece in itself. A private cinema and theatre were built, alongside a pool bar housing real caiman crocodiles.

Today, essences of its intriguing past still remain – reimagined with the elegance of a five-star hotel.





THE MAY FAIR

A RADISSON COLLECTION HOTEL

THE MAY FAIR

Rooms

EVENTS SPACES

Suites

THEATRE

Events Spaces

SOCIAL EVENTS

May Fair Kitchen

TECHNOLOGY

May Fair Bar

ROOM SPECIFICATIONS

May Fair Spa

CONTACT US

Location

SPACE TO RELAX

Space is a scarcity in London, but not at The May Fair Hotel. Superior Rooms average a generous 24sqm, whilst Family Rooms and Studio Suites are nearly twice as large.

Each of the bedrooms feature contemporary décor, with British handcrafted Vispring beds, goose down pillows and 400 thread count Egyptian cotton bedding. The spacious bathrooms come with rain showers and Noble Isle bath amenities, whilst complimentary high-speed Wi-Fi up to 150Mbps on unlimited devices allows guests to stream, surf and share unrestrictedly.





THE MAY FAIR

A RADISSON COLLECTION HOTEL

THE MAY FAIR

Rooms

EVENTS SPACES

Suites

THEATRE

Events Spaces

SOCIAL EVENTS

May Fair Kitchen

TECHNOLOGY

May Fair Bar

ROOM SPECIFICATIONS

May Fair Spa

CONTACT US

Location

WHEN IN MAYFAIR...

The neighbourhood's opulence is best echoed in the hotel's signature suites. All designed with unique individuality, they benefit from added luxuries such as Sonos systems, freestanding bathtubs and rain showers, separate areas for dining and relaxing, 24-hour butler service, as well as outdoor terraces with spectacular views in the Penthouse and Ebony Suites. In keeping with the hotel's commitment to fashion, the eponymous Schiaparelli Suite is draped in the famed designer's signature fuchsia tones.





THE MAY FAIR

A RADISSON COLLECTION HOTEL

THE MAY FAIR

Rooms

EVENTS SPACES

Suites

THEATRE

Events Spaces

SOCIAL EVENTS

May Fair Kitchen

TECHNOLOGY

May Fair Bar

ROOM SPECIFICATIONS

May Fair Spa

CONTACT US

Location

SPACES

Discover a variety of spaces designed for a multitude of purposes: a 201-seat private screening room, two versatile and beautiful event rooms for up to 370 guests, an airy atrium and 11 Private Suites. Our experienced event organisers will assist you with any request or query you may have.

CRYSTAL ROOM >

FIRST FLOOR >

DANZIGER & ATRIUM >

MAY FAIR THEATRE >





THE MAY FAIR

A RADISSON COLLECTION HOTEL

THE MAY FAIR

Rooms

EVENTS SPACES

Suites

THEATRE

Events Spaces

SOCIAL EVENTS

May Fair Kitchen

TECHNOLOGY

May Fair Bar

ROOM SPECIFICATIONS

May Fair Spa

CONTACT US

Location

HAUTE CUISINE

The flagship restaurant of the award-winning Kitchens brand, May Fair Kitchen presents an intimate, secluded Japanese izakaya and Italian restaurant experience, hiding in the vibrant hum of London's most iconic neighbourhood.

Meeting the increasing demand of the plant-based food scene, May Fair Kitchen also offers dedicated vegan menus.





THE MAY FAIR

A RADISSON COLLECTION HOTEL

[THE MAY FAIR](#)

[Rooms](#)

[EVENTS SPACES](#)

[Suites](#)

[THEATRE](#)

[Events Spaces](#)

[SOCIAL EVENTS](#)

[May Fair Kitchen](#)

[TECHNOLOGY](#)

[May Fair Bar](#)

[ROOM SPECIFICATIONS](#)

[May Fair Spa](#)

[CONTACT US](#)

[Location](#)

THE PERFECT BLEND

Discover an intimate dining and drinking experience in the heart of Mayfair, moments from Berkeley Square and Green Park. Inspired by the philosophy of travel, the new May Fair Bar takes guests on a sensory journey through mixology and cuisine. By day, guests enjoy breakfast and brunch classics, as well as an exquisite lunch menu. By night, May Fair Bar transforms into a sophisticated cocktail bar for cocktails and night bites





THE MAY FAIR

A RADISSON COLLECTION HOTEL

THE MAY FAIR

Rooms

EVENTS SPACES

Suites

THEATRE

Events Spaces

SOCIAL EVENTS

May Fair Kitchen

TECHNOLOGY

May Fair Bar

ROOM SPECIFICATIONS

May Fair Spa

CONTACT US

Location

PRESS PAUSE

May Fair Spa offers a holistically tailored experience, with treatments that are carefully structured to put time on hold, creating a discreet, healing inner sanctuary, far from the whirl of central London above. The expertise and care of May Fair Spa's knowledgeable therapists are combined with a menu of treatments and massages that use world-leading and natural ESPA products.

Spa facilities include an aromatic steam room, herbal sauna, experience showers, ice fountain and candlelit relaxation room with heated beds.





THE MAY FAIR

A RADISSON COLLECTION HOTEL

THE MAY FAIR

Rooms

EVENTS SPACES

Suites

THEATRE

Events Spaces

SOCIAL EVENTS

May Fair Kitchen

TECHNOLOGY

May Fair Bar

ROOM SPECIFICATIONS

May Fair Spa

CONTACT US

Location

THE SECRET IS IN THE NAME

Welcome to one of the most luxurious neighbourhoods in the world. Perfectly located moments from exclusive boutiques, restaurants and central London attractions, Mayfair is an iconic area renowned for its arts and culture heritage and convenience for all visitors.

Car Park

NCP Grosvenor Hill

Underground

Green Park (Piccadilly, Victoria and Jubilee lines)

Crossrail

Bond Street (ElizabethLine)

Airports

City Airport (11 miles)

Heathrow (15 miles)

Gatwick (28 miles)

Luton (35 miles)

Stansted (37 miles)

The May Fair, A Radisson Collection Hotel

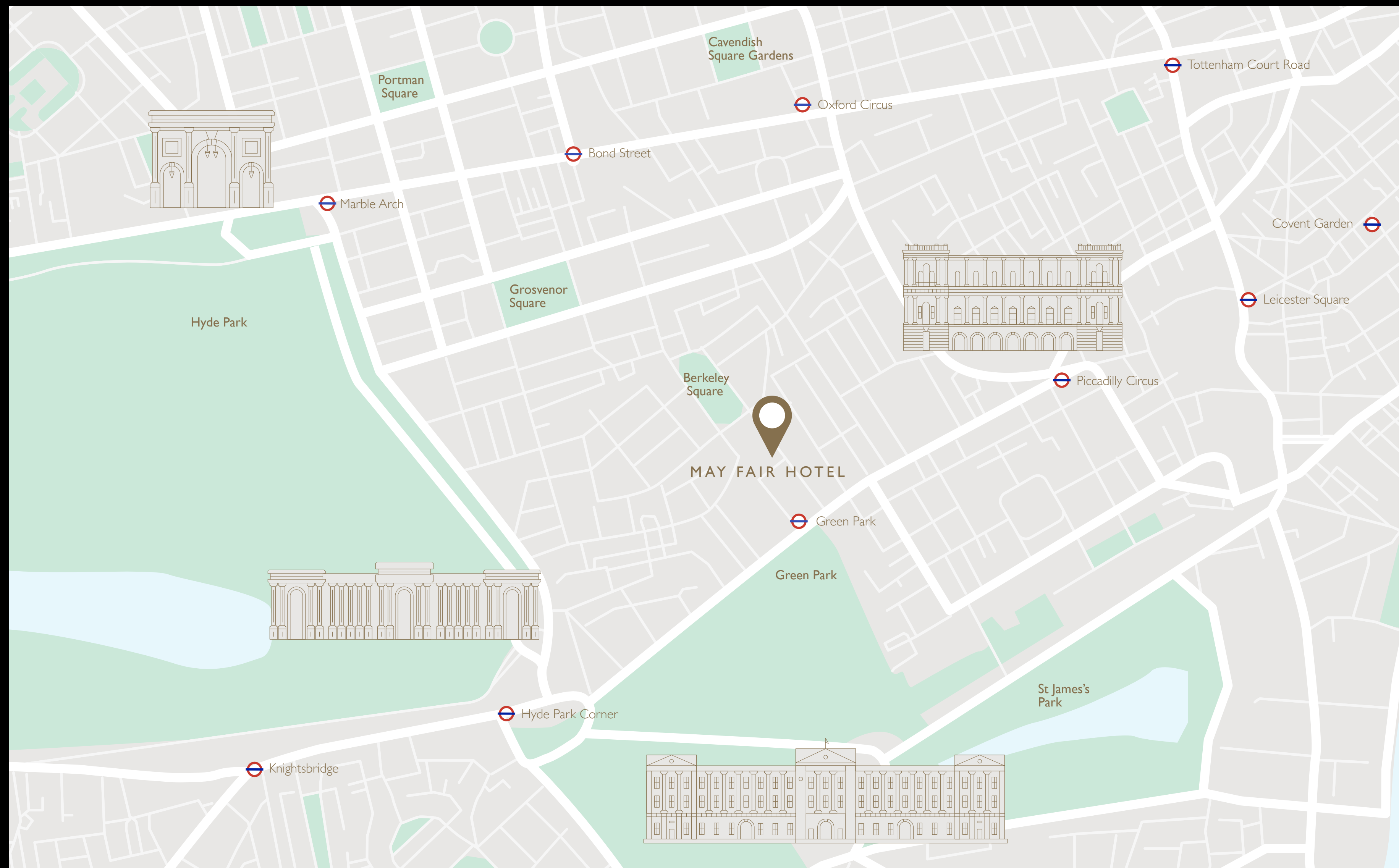
★★★★★

Stratton Street, London W1J 8 LT

T +44 (0)20 7915 3898

E events@themayfairhotel.co.uk

W themayfairhotel.co.uk





THE MAY FAIR

A RADISSON COLLECTION HOTEL

THE MAY FAIR

Crystal Room

EVENTS SPACES

Danziger

THEATRE

Atrium

SOCIAL EVENTS

First Floor

TECHNOLOGY

ROOM SPECIFICATIONS

CONTACT US

PIÈCE DE RÉSISTANCE

Crystal Room

The Crystal Room is The May Fair Hotel's intimately grand showpiece. Completely secluded and available exclusively to your guests, it exudes the ambience of a ballroom from a bygone era – crowned with a six-metre bespoke Baccarat chandelier.

Entertaining

Perfect for hosting, our Crystal Room is connected to May Fair Theatre, as well as having its own private entrance, cloakroom and bathrooms.

The Big Reveal

Featuring a retractable divider, the Crystal Room can add theatrics to your event – revealing an unexpected, previously unseen setting to your guests.

ROOM DIMENSIONS >

FLOORPLANS >

ROOM CAPACITIES >

VIRTUAL TOUR >





THE MAY FAIR

A RADISSON COLLECTION HOTEL

THE MAY FAIR

Crystal Room

EVENTS SPACES

Danziger

THEATRE

Atrium

SOCIAL EVENTS

First Floor

TECHNOLOGY

ROOM SPECIFICATIONS

CONTACT US

SET THE SCENE

Danziger Suite

Befitting its namesake Hollywood impresarios, the Danziger Suite is characterised by Art Deco detailing and the technology required to put on a performance. Danziger's intimate elegance and rich colour palette is ideal for presentations and talks, combined with drinks receptions in the bright adjoining Atrium.

Entertaining

Perfect for hosting, our Danziger Suite is located in seclusion on the first floor - a cloakroom, lifts and bathrooms providing added convenience.

Total Exclusivity

Ideal for roadshows, the hotel's Danziger Suite may be reserved together with The Atrium and the Private Suites - an entire floor for your use only.

ROOM DIMENSIONS >

FLOORPLANS >

ROOM CAPACITIES >

VIRTUAL TOUR >





THE MAY FAIR

A RADISSON COLLECTION HOTEL

THE MAY FAIR

Crystal Room

EVENTS SPACES

Danziger

THEATRE

Atrium

SOCIAL EVENTS

First Floor

TECHNOLOGY

ROOM SPECIFICATIONS

CONTACT US

SEE THE LIGHT

The Atrium

A vaulted glass ceiling and surrounding plants give The Atrium a sense of natural beauty, right in the heart of Mayfair. Airy, bright and secluded, The Atrium is designed to enhance breaks and receptions.

Total Exclusivity

Ideal for roadshows, The Atrium may be reserved together with the Danziger Suite and the Private Suites - an entire floor for your use only.

ROOM DIMENSIONS >

FLOORPLANS >

ROOM CAPACITIES >

VIRTUAL TOUR >



MEETING IN PROGRESS

Private Suites

Discover 11 Private Suites located on the first floor, most of which benefit from natural light. Their close proximity makes it easy to hold several separate meetings at once, whilst the layout in a majority of them can be configured to suit different purposes. Hold anything from an intimate one-on-one to a session for 100.

Total Exclusivity

Ideal for roadshows, the hotel's Private Suites may be reserved together with the Danziger Suite and The Atrium – an entire floor for your use only.

Flexibility

Wherever extra and even more secluded meeting space is required, up to 50 syndicate bedrooms can be converted to suit specific needs.

ROOM DIMENSIONS >

FLOORPLANS >

ROOM CAPACITIES >

VIRTUAL TOUR >





THE MAY FAIR

A RADISSON COLLECTION HOTEL

THE MAY FAIR

EVENTS SPACES

THEATRE

SOCIAL EVENTS

TECHNOLOGY

ROOM SPECIFICATIONS

CONTACT US

Technical Specification

THE BIGGER PICTURE

May Fair Theatre

Often host to film screenings and events, the 201-seat May Fair Theatre is the perfect space to add purpose and experiential elements to presentations, live streamed events, meetings and private parties. Discover intimate cinematic experiences in the heart of Mayfair, powered by big screen technology.

Guest Journey

May Fair Theatre is connected to a secluded breakout area and the impressive Crystal Room - creating a seamless guest journey for refreshment breaks, cocktail receptions and dining.

ROOM DIMENSIONS >

FLOORPLANS >

ROOM CAPACITIES >

VIRTUAL TOUR >

TECHNICAL SPECIFICATIONS >





BEHIND THE SCENES

at May Fair Theatre

[ROOM DIMENSIONS >](#)[FLOORPLANS >](#)[ROOM CAPACITIES >](#)[VIRTUAL TOUR >](#)

May Fair Theatre

Vision

- RealD 3D
- Premium quality 8x3.8m cinema screen with high-contrast masking for scope, flat, 16:9 and 4:3 ratio media
- 2 x 55" high-definition LED screen displays for branding/speaker information facilities
- Barco 2k digital cinema projector
- Digital cinema projectors, Christie CP4230 4K and NEC 3240S 4K 3D

Sound

- 7.1 THX certified surround sound system featuring:
- Video and audio feeds
- Microphone system with audience-focused cameras

Set

- 201 Italian leather seats with fold-out desks
- Full theatre lighting rig
- Private access to Private Dining Room and May Fair Kitchen
- Stage lighting and control booth

Systems

- Voting system
- Text messaging and display system
- 4 channel translation system



THE MAY FAIR

A RADISSON COLLECTION HOTEL

THE MAY FAIR

Private Dining

EVENTS SPACES

Weddings

THEATRE

SOCIAL EVENTS

TECHNOLOGY

ROOM SPECIFICATIONS

CONTACT US

CELEBRATE IN PRIVATE

Beautiful spaces, secluded from the public. Exquisite dining, designed to inspire conversation. Private dining at The May Fair Hotel is that and so much more, coupled with attentive service.

Discover an intimate chambre séparée for up to 64 dining guests, with antique walnut parquet flooring, dark wood panelling and an emerald green fireplace, or show your guests to a private heated terrace with comfortable lounge seating. Whatever dietary or religious dining requests you may have, our chefs will create bespoke menu options for your event.





THE MAY FAIR

A RADISSON COLLECTION HOTEL

THE MAY FAIR

Private Dining

EVENTS SPACES

Weddings

THEATRE

SOCIAL EVENTS

TECHNOLOGY

ROOM SPECIFICATIONS

CONTACT US

A MAYFAIR MARRIAGE

The world's most exclusive neighbourhood. Impressive rooms to seat all your guests. A beautiful wedding suite. Delicious haute cuisine. London weddings simply do not get any better than in Mayfair.

[WEDDING BROCHURE >](#)





THE MAY FAIR

A RADISSON COLLECTION HOTEL

THE MAY FAIR

EVENTS SPACES

THEATRE

SOCIAL EVENTS

TECHNOLOGY

ROOM SPECIFICATIONS

CONTACT US

Technology

TECHNOLOGY

Specific technology is available to ensure the success and seamless operation of your event.

Connected

Superfast Wi-Fi up to 150Mbps on unlimited devices is complimentary for all guests.

Streamlined

Meet Edward, your virtual events host. Powered by AI technology, Edward responds to requests and questions via text message. Resolve any on-demand requirements discreetly, speedily and easily.





ROOM DIMENSIONS

THE MAY FAIR

EVENTS SPACES

THEATRE

SOCIAL EVENTS

TECHNOLOGY

ROOM SPECIFICATIONS

CONTACT US

Room Dimensions













Room Capacities

Floorplans

Virtual Tours

Dimensions Lower Ground	Length	Width	Height	Area	Access & Daylight	Doors
Crystal Room	27.8m 91'2ft	12.1m 39'8ft	3.5m 11'6ft	336m ² 3616sq.ft	L/S/SA	1.6 x2.4m 5'3x7'10ft
Crystal Room A	22.2m 72'10ft	12.1m 39'8ft	3.5m 11'6ft	269m ² 2888sq.ft	L/S/SA	1.6 x2.4m 5'3x7'10ft
Crystal Room B	5.6m 18'5ft	12.1m 39'8ft	3.5m 11'6ft	269m ² 2888sq.ft	L/S/SA	1.6x2.4m 5'3x7'10ft
The May Fair Theatre	15.8m 51'10ft	11.2m 36'9ft	3.5-4.8m 11'6-15'9ft	177m ² 1905sq.ft	L/S	1.5 x2.0m 4'11x6'7ft
The May Fair Theatre (Stage)	2.3m 7'6ft	8.6m 28'3ft	4.8m 15'9ft	20m ² 212sq.ft	L/S	1.5 x2.0m 4'11 x 6'7ft
The May Fair Theatre (Seating)	13.5m 44'4ft	11.2m 36'9ft	3.5-4.8m 11'6-15'9ft	151m ² 1629sq.ft	L/S	1.5 x2.0m 4'11 x 6'7ft
Ground Floor						
Private Dining Room	19.9m 65'4ft	5.9-7.1m 19'4-23'3ft	2.3m 7'7ft	129m ² 1384ft	G	1.4 x 2m 4'7 x 6'7ft
First Floor						
Danziger Suite	19.8m 65ft	11.1m 36'5 ft	3.5m 11'6ft	220m ² 2367sq.ft	L/S	1.4 x 2.2m 4'7 ft x 7'3ft
Danziger Suite A	12.1m 39'8ft	11.1m 36'5 ft	3.5m 11'6ft	134m ² 1444sq.ft	L/S	1.4 x 2.2m 4'7 x 7'3ft
Danziger Suite B	7.7m 25'3ft	11.1m 36'5 ft	3.5m 11'6ft	85m ² 920sq.ft	L/S	1.4 x 2.2m 4'7 x 7'3ft
Atrium	11.8m 38'9ft	11.8m 38'9 ft	6.2-7.9m 20'4-25'11ft	118m ² 1272sq.ft	L/S/DL	N/A
Atrium (Upper)	6.4m 21ft	10m 32'10ft	6.6-7.9m 21'8-25'11ft	64m ² 689sq.ft	L/S/DL	N/A
Atrium (Lower)	5.4m 17'9ft	5.5m 18'ft	6.2m 20'4ft	30m ² 320sq.ft	L/S/DL	N/A
Private Room 1	9m 29'6ft	6.2m 20'4ft	2.2m 7'3ft	56m ² 600sq.ft	L/S/DL	1 x2m 3'3 x 6'7 ft
Private Room 2	8.5m 27ft	5.8m 19ft	2.2m 7'3ft	49m ² 513sq.ft	L/S/DL	0.9 x 2m 2'11 x 6'7 ft
Private Room 3	8.4m 27'7ft	5.3m 17'5ft	2.2m 7'3ft	45m ² 480sq.ft	L/S/DL	0.9 x 2m 2'11 x 6'7ft
Private Room 4	5.5m 18ft	5.7m 18'8ft	2.2m 7'3ft	31m ² 336sq.ft	L/S/DL	0.9 x 2m 2'11 x 6'7ft
Private Room 5	7.4m 24'3ft	5.8m 19ft	2.2m 7'3ft	43m ² 461sq.ft	L/S	0.9 x 2m 2'11 x 6'7ft
Private Room 6	4m 13'1ft	4.3m 14'1ft	2.3m 7'7ft	17m ² 184sq.ft	L/S/DL	0.9 x 2m 2'11 x 6'7ft
Private Room 7	12.4m 40'8ft	6.3m 20'8ft	2.3m 7'7ft	78m ² 840 sq.ft	L/S/DL	0.9 x 2m 2'11 x 6'7ft
Private Room 8	18.9m 62ft	7.2m 23'8ft	2.3m 7'7ft	136m ² 1467sq.ft	L/S/DL	0.9 x 2m 2'11 x 6'7ft
Private Room 9	7.8m 25'7ft	3.6m 11'10ft	2.3m 7'7ft	28m ² 303sq.ft	L/S	0.9 x 2m 2'11 x 6'7ft
Private Room 10	4.2m 13'9ft	3.7m 12'2ft	2.2m 7'3ft	15m ² 167sq.ft	L/S	0.9 x 2m 2'11 x 6'7ft
Private Room 11	4m 13'1ft	4.1m 13'5ft	2.3m 7'7ft	16m ² 176sq.ft	L/S	0.9 x 2m 2'11 x 6'7ft

ROOM CAPACITIES

												
	Theatre	Classroom	Cabaret	U-Shape	Boardroom	Lunch/ Dinner	Reception	Max	HD Projectors	LED Screens	HD Laser Projector	HD Cinema Projector
Crystal	300	140	120	65	60	220	370	336.4	Y			
Theatre	201							177.0		Y		Y
Danziger	220	110	120	65	60	170	220	219.8	Y			
Atrium							150	118.0				
Private Suite 1	60	30	32	32	30	50	60	55.8		Y		
Private Suite 2					18	18		49.3		Y		
Private Suite 3	40	20	32	22	20	40	50	44.5		Y		
Private Suite 4					10	10		31.4		Y		
Private Suite 5	30	18	24	18	16	30	35	42.9		Y		
Private Suite 6					6			17.2		Y		
Private Suite 7	70	36	40	32	30	70	80	78.1			Y	
Private Suite 8	100	60	64	54	50	100	120	136.1			Y	
Private Suite 9					12	14		28.1		Y		
Private Suite 10					6	6		15.5		Y		
Private Suite 11					6	6		16.4		Y		
May Fair Kitchen						150						
Private Dining Room	36		30		20	64	80	129.0				
May Fair Terrace							50					

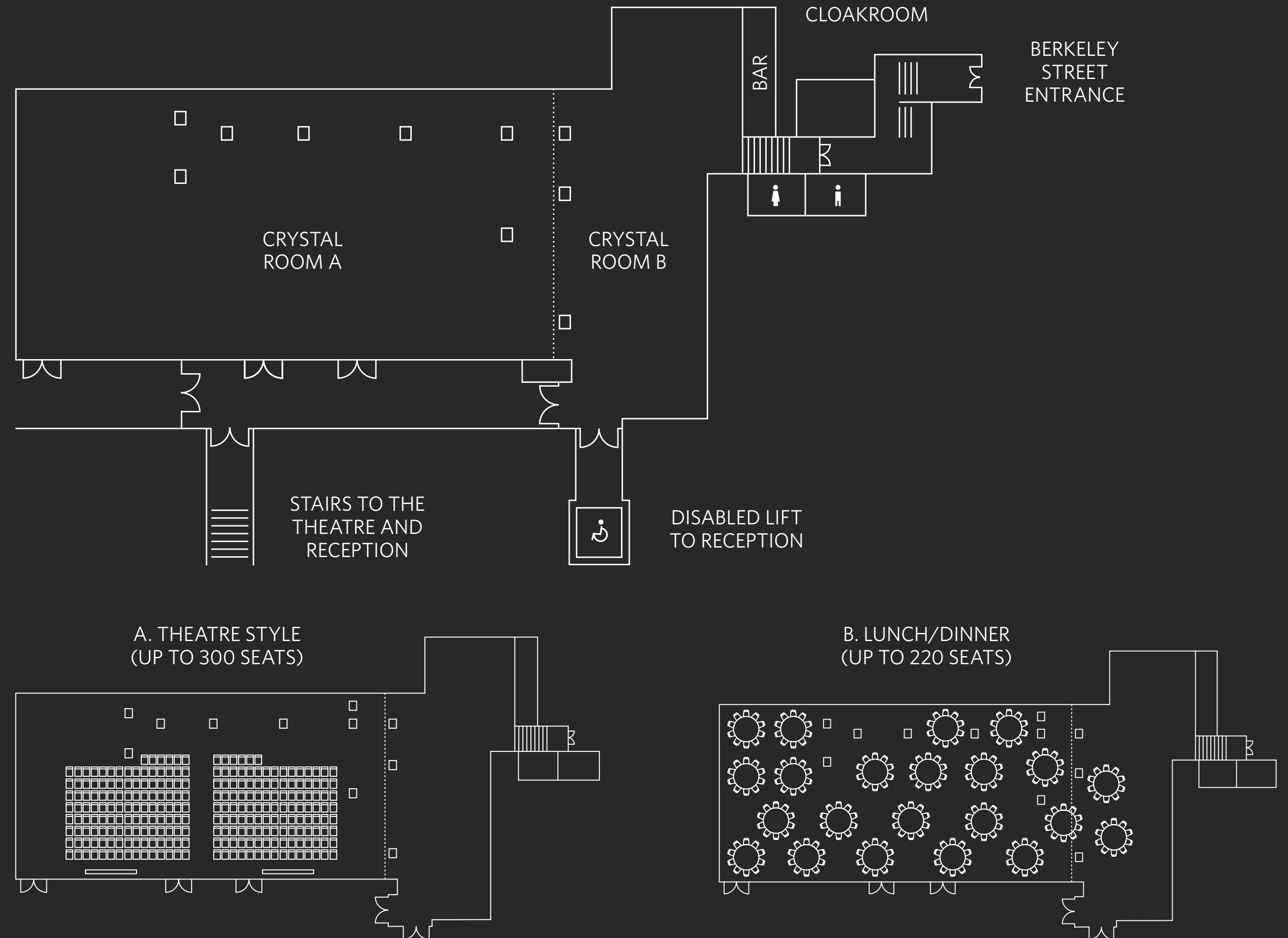
FLOORPLANS

- Up to 300 theatre style or 220 for dinner
- Design features include bronze and lacquered walls and a Baccarat chandelier
- Private entrance on Berkeley Street or via main lobby private bar
- Private access to May Fair Bar
- Private cloakroom
- Fully integrated AV and lighting system

ROOM DIMENSIONS >

ROOM CAPACITIES >

Crystal Room



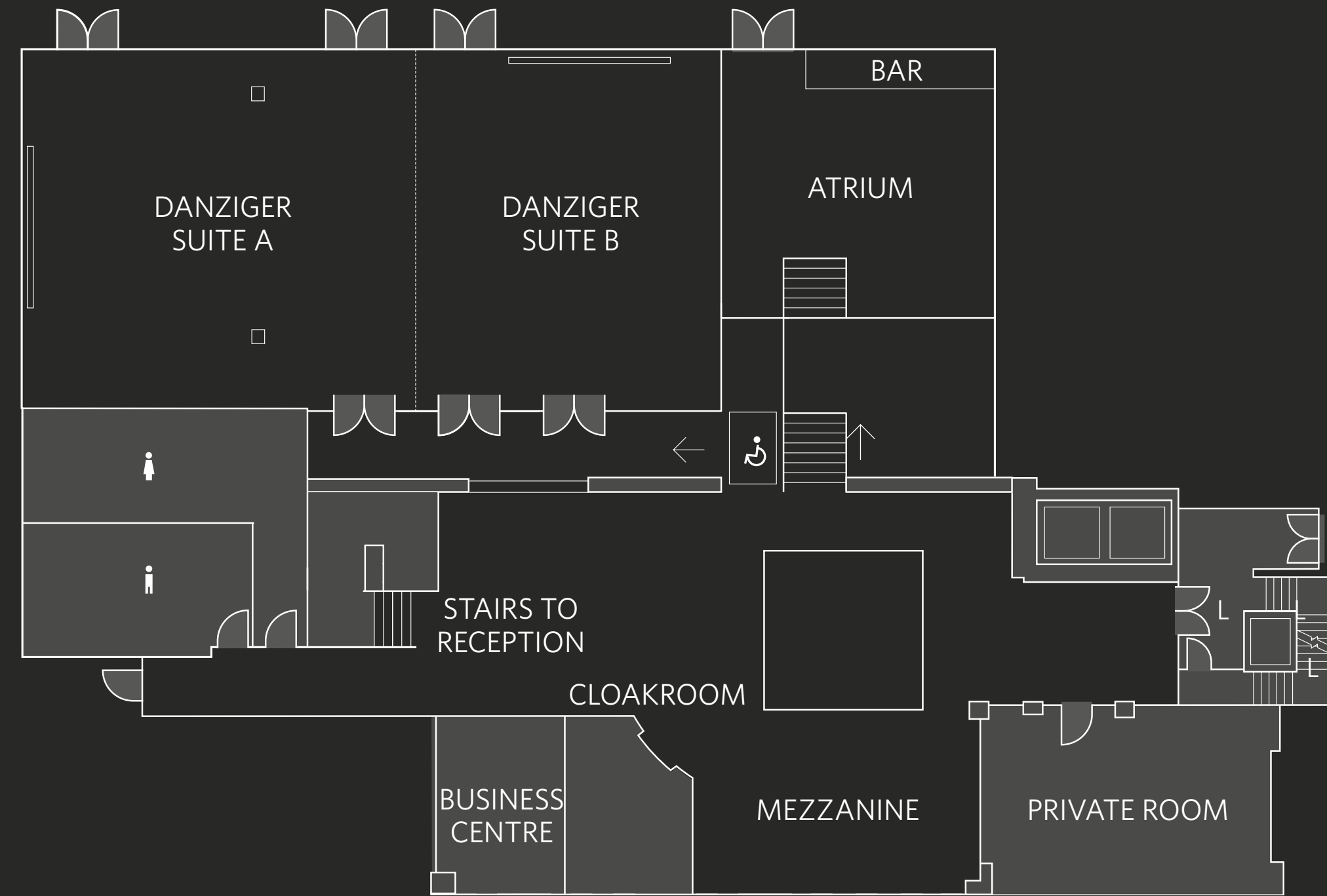
FLOORPLANS

- Up to 220 theatre style or 170 for dinner
- Located adjacent to atrium with private bar, opposite business centre and close to private rooms
- Fully integrated AV and lighting system

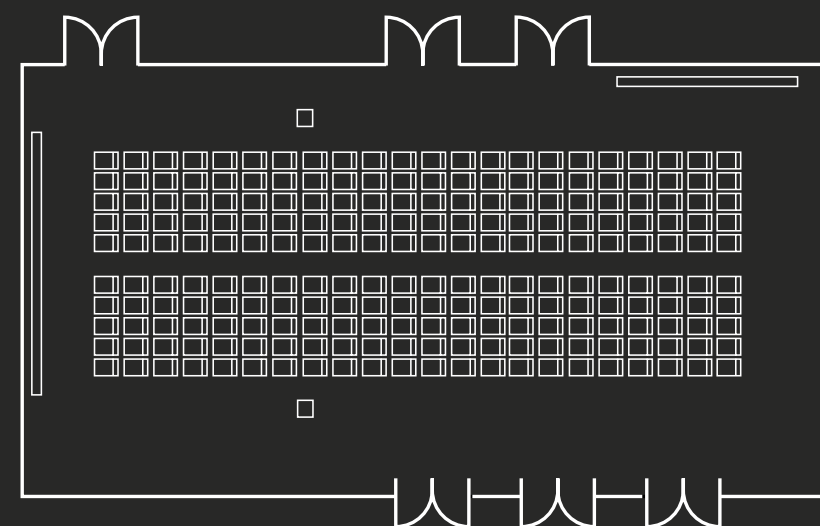
ROOM DIMENSIONS >

ROOM CAPACITIES >

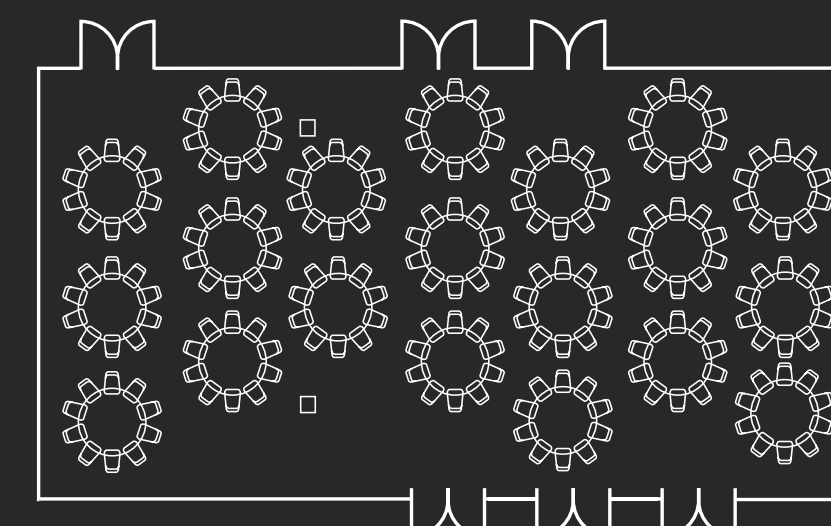
Danziger & Atrium



A. THEATRE STYLE
UP TO 220 SEATS



B. LUNCH/DINNER
UP TO 170 SEATS



FLOORPLANS

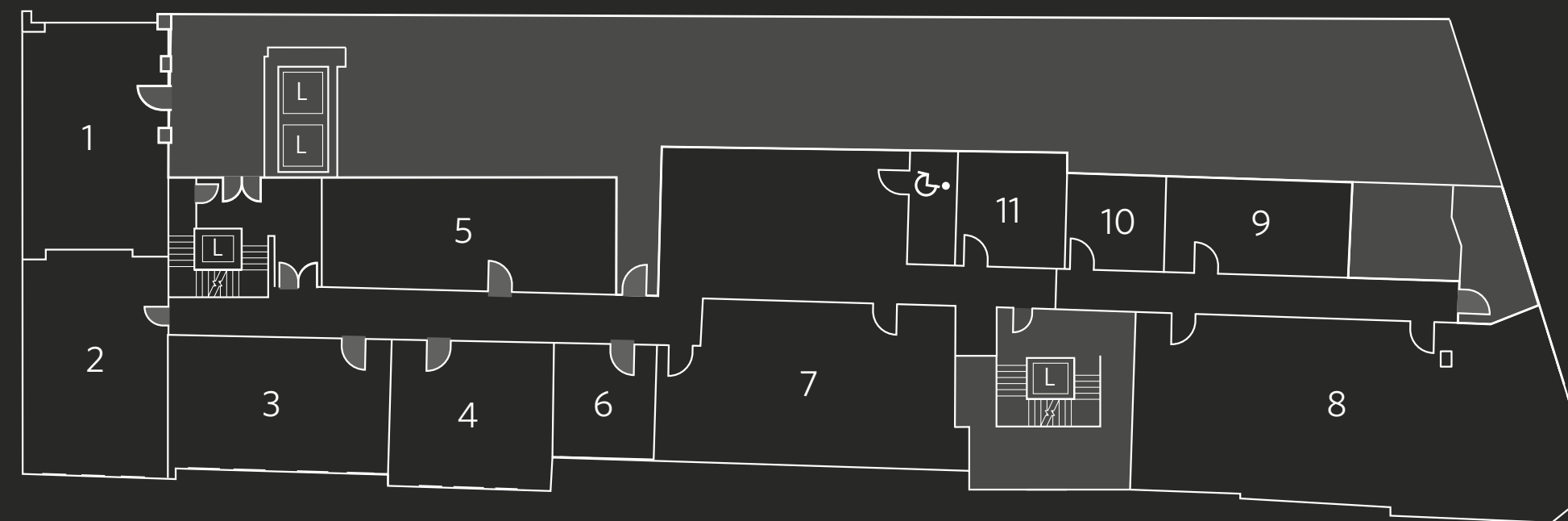
- Capacities from 6 to 120
- Fully integrated
- AV systems
- Natural daylight in the majority of rooms
- All rooms located close together
- A large central breakout area
- Individually designed spaces offering exclusive and discreet options for private dining

ROOM DIMENSIONS >

ROOM CAPACITIES >

First Floor

	Length	Width	Height	Area
Private Room 1	9m 29'6ft	6.2m 20'4ft	2.2m 7'3ft	56m ² 600sq.ft
Private Room 2	8.5m 27ft	5.8m 19ft	2.2m 7'3ft	49m ² 513sq.ft
Private Room 3	8.4m 27'7ft	5.3m 17'5ft	2.2m 7'3ft	45m ² 480sq.ft
Private Room 4	5.5m 18ft	5.7m 18'8ft	2.2m 7'3ft	31m ² 336sq.ft
Private Room 5	7.4m 24'3ft	5.8m 19ft	2.2m 7'3ft	43m ² 461sq.ft
Private Room 6	4m 13'1ft	4.3m 14'1ft	2.3m 7'7ft	17m ² 184sq.ft
Private Room 7	12.4m 40'8ft	6.3m 20'8ft	2.3m 7'7ft	78m ² 840 sq.ft
Private Room 8	18.9m 62ft	7.2m 23'8ft	2.3m 7'7ft	136m ² 1467sq.ft
Private Room 9	7.8m 25'7ft	3.6m 11'10ft	2.3m 7'7ft	28m ² 303sq.ft
Private Room 10	4.2m 13'9ft	3.7m 12'2ft	2.2m 7'3ft	15m ² 167sq.ft
Private Room 11	4m 13'1ft	4.1m 13'5ft	2.3m 7'7ft	16m ² 176sq.ft





THE MAY FAIR
A RADISSON COLLECTION HOTEL

THE MAY FAIR

Room Dimensions

EVENTS SPACES

Room Capacities

THEATRE

Floorplans
1 2 3 4

SOCIAL EVENTS

Virtual Tours

TECHNOLOGY

ROOM SPECIFICATIONS

CONTACT US

FLOORPLANS

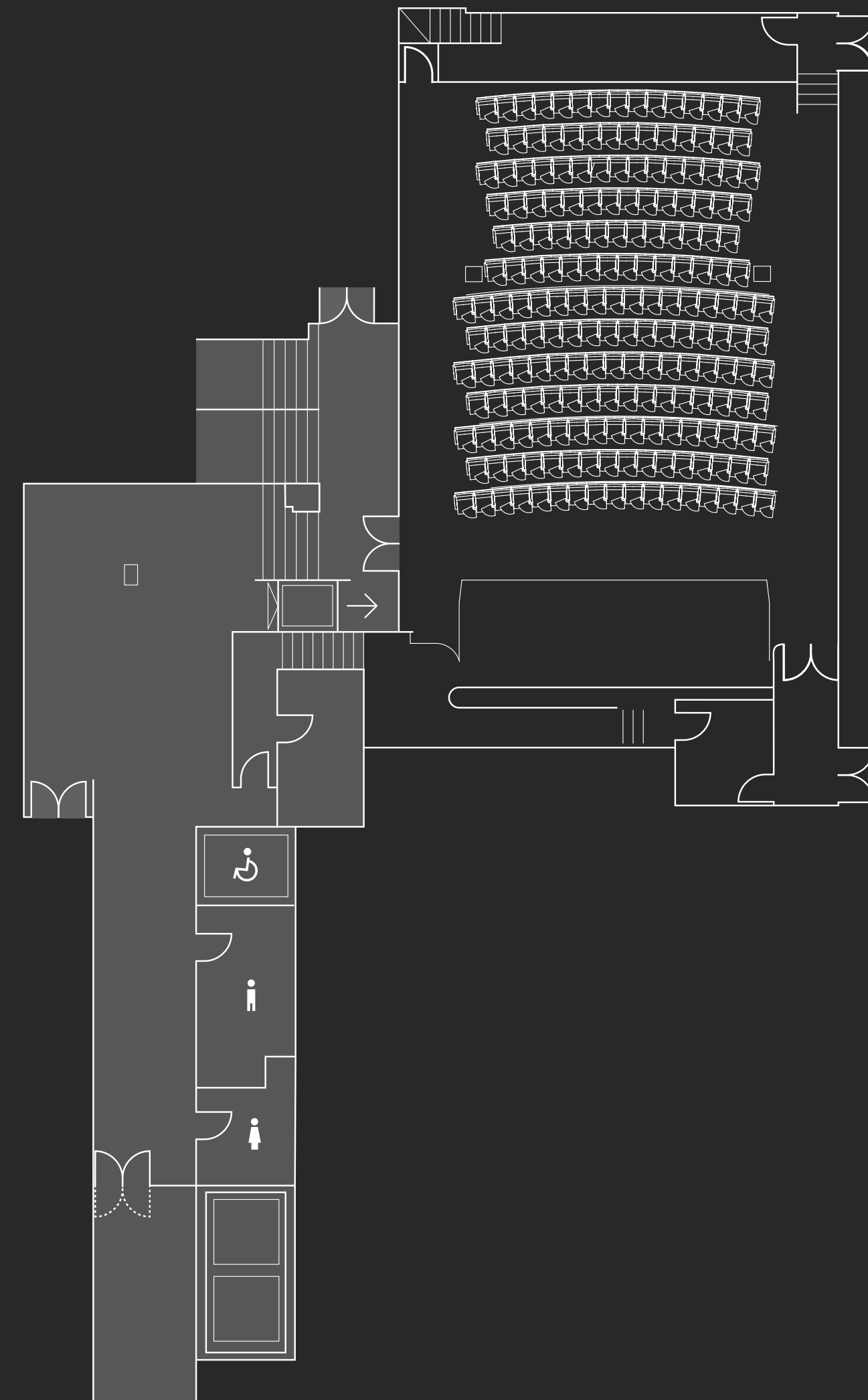
- 201 custom designed Italian leather seats
- Fold out desks
- Private access to the Private Dining Room and May Fair Kitchen

ROOM DIMENSIONS >

ROOM CAPACITIES >

TECHNICAL SPECIFICATIONS >

May Fair Theatre



ACCESS TO
MAY FAIR
KITCHEN



THE MAY FAIR

A RADISSON COLLECTION HOTEL

THE MAY FAIR

Room Dimensions

EVENTS SPACES

Room Capacities

THEATRE

Floorplans

SOCIAL EVENTS

Virtual Tours

TECHNOLOGY

ROOM SPECIFICATIONS

CONTACT US

VIRTUAL TOURS

Take a tour of The May Fair Hotel and discover the look and layout of our event spaces, private suites, restaurant and bar, rooms and more.

VIRTUAL TOUR





THE MAY FAIR

A RADISSON COLLECTION HOTEL

[THE MAY FAIR](#)

[EVENTS SPACES](#)

[THEATRE](#)

[SOCIAL EVENTS](#)

[TECHNOLOGY](#)

[ROOM SPECIFICATIONS](#)

[CONTACT US](#)

CONTACT US

The May Fair, A Radisson Collection Hotel

★★★★★

Stratton Street, London W1J 8 LT

T +44 (0)20 7915 3898

E events@themayfairhotel.co.uk

W themayfairhotel.co.uk

Owned and managed by Edwardian Hotels London

