



# THE PENTHOUSE SUITE

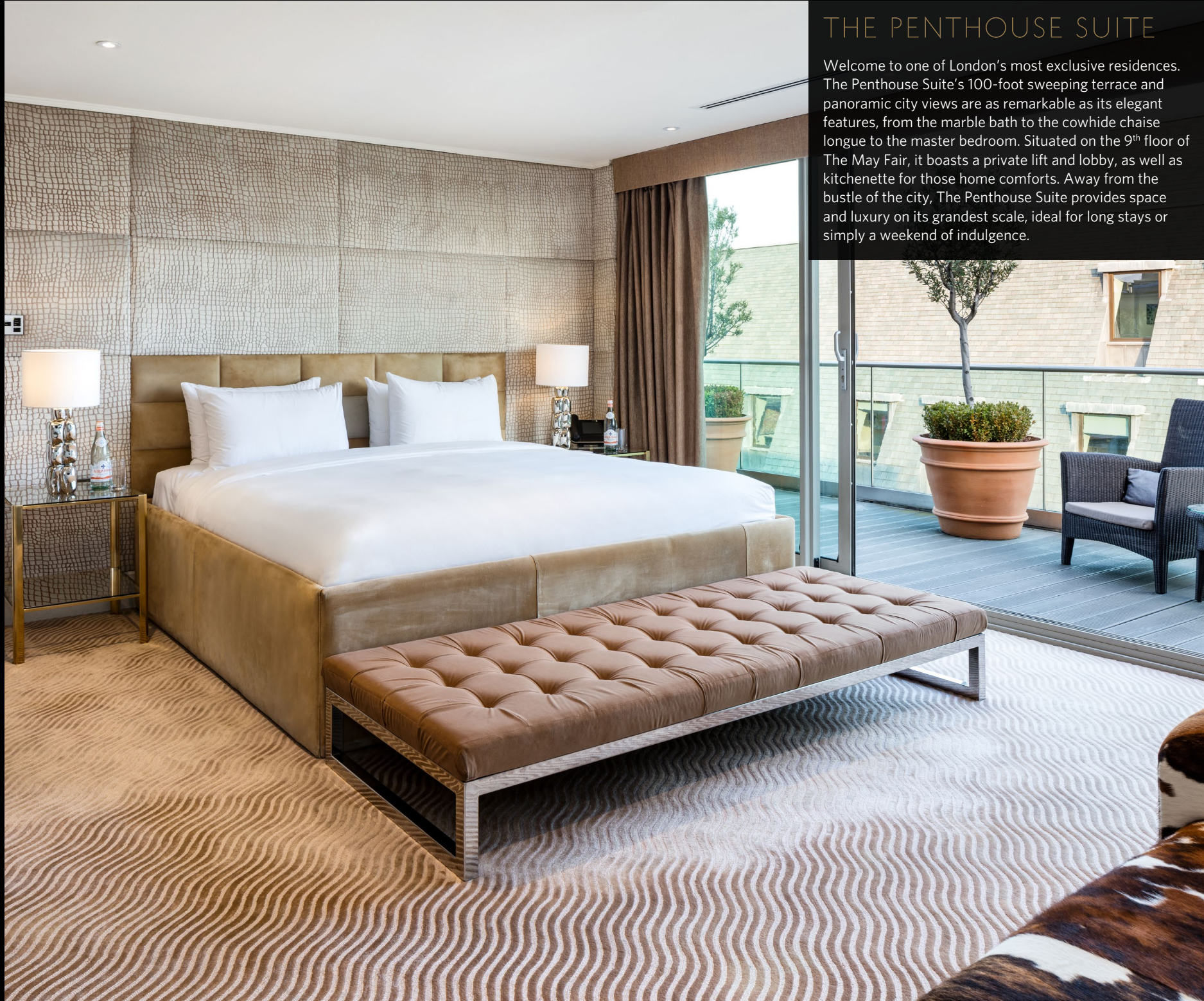
[Click to enter](#)



## THE PENTHOUSE SUITE

### FLOOR PLAN

### WHERE TO FIND US



## THE PENTHOUSE SUITE

Welcome to one of London's most exclusive residences. The Penthouse Suite's 100-foot sweeping terrace and panoramic city views are as remarkable as its elegant features, from the marble bath to the cowhide chaise longue to the master bedroom. Situated on the 9<sup>th</sup> floor of The May Fair, it boasts a private lift and lobby, as well as kitchenette for those home comforts. Away from the bustle of the city, The Penthouse Suite provides space and luxury on its grandest scale, ideal for long stays or simply a weekend of indulgence.

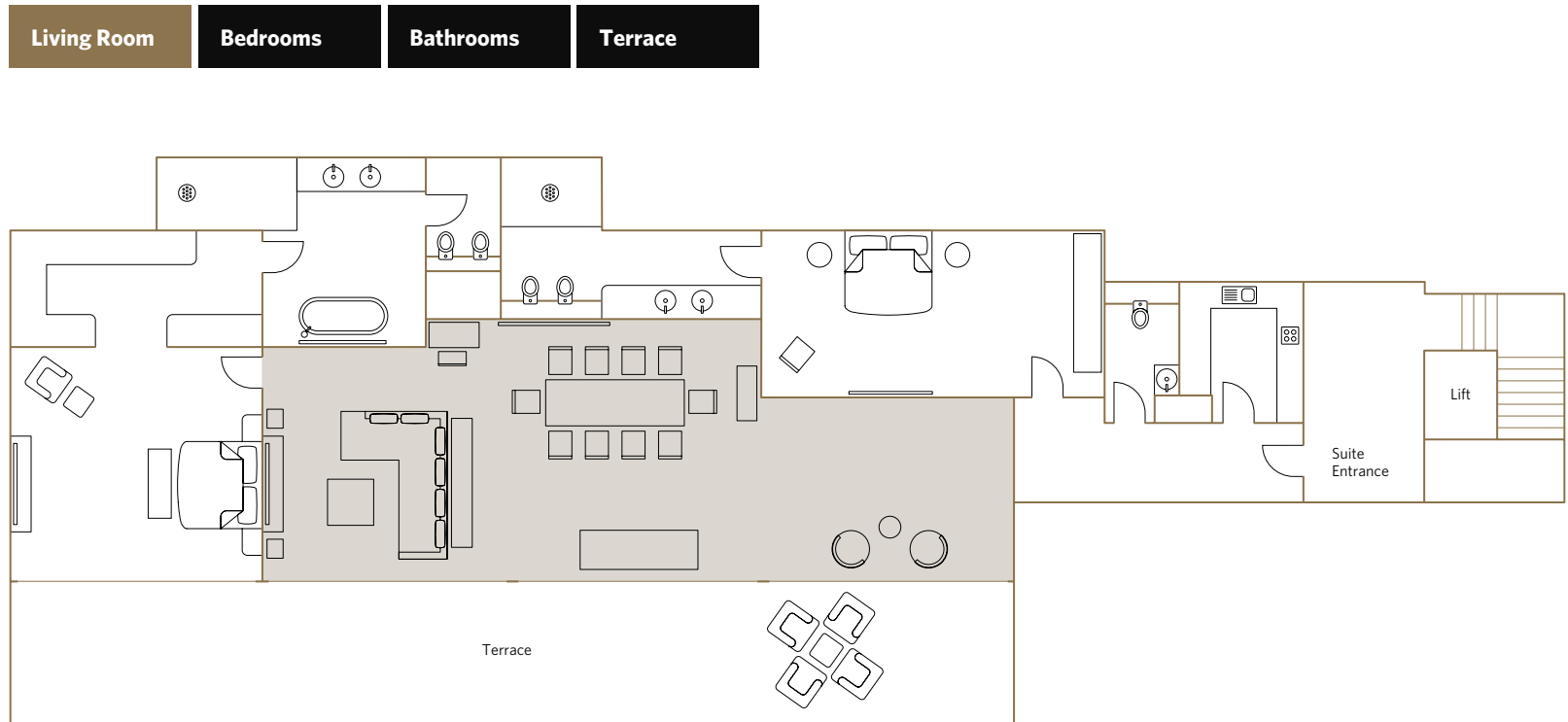




## THE PENTHOUSE SUITE

### FLOOR PLAN

#### WHERE TO FIND US



#### The Penthouse Suite offers:

- 100' x 8' decked terrace with panoramic views over London
- Master bedroom with double dressing room and king size double bed
- Bathroom with marble sarcophagus bath, LCD TV and illuminated rain shower
- Samsung plasma TV in lounge and both bedrooms with soundbar
- Dining area with full size ten-seat dining table
- Kitchen for entertaining
- Complimentary high speed Wi-Fi

#### Services included:

- 24-hour guest relations service includes pre-arrival arrangements, shoe polishing, packing and pressing services and in-room dining
- Fresh flowers

#### Location and size:

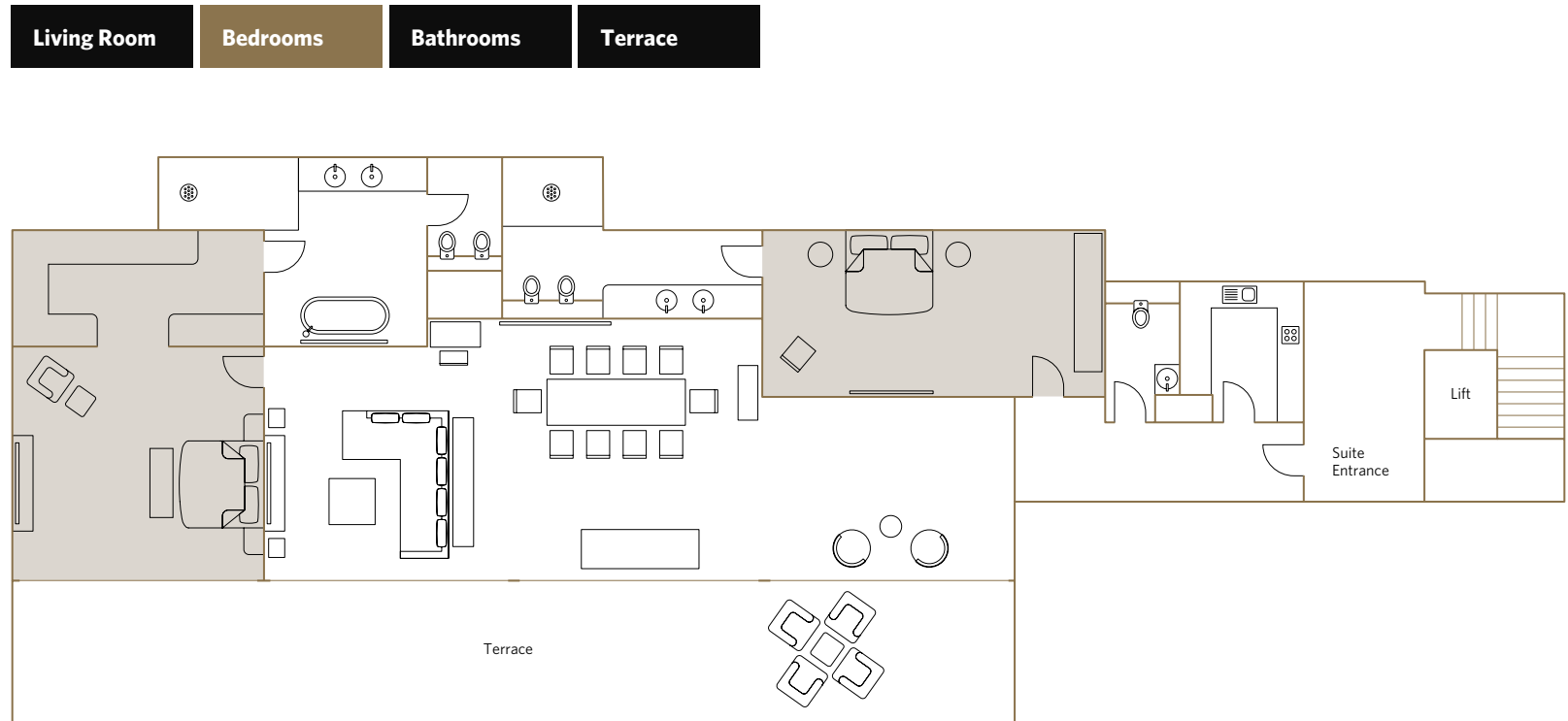
- Located on the 9<sup>th</sup> floor
- 199m<sup>2</sup>/2137.6 sq.ft



## THE PENTHOUSE SUITE

### FLOOR PLAN

#### WHERE TO FIND US



#### The Penthouse Suite offers:

- 100' x 8' decked terrace with panoramic views over London
- Master bedroom with double dressing room and king size double bed
- Bathroom with marble sarcophagus bath, LCD TV and illuminated rain shower
- Samsung plasma TV in lounge and both bedrooms with soundbar
- Dining area with full size ten-seat dining table
- Kitchen for entertaining
- Complimentary high speed Wi-Fi

#### Services included:

- 24-hour guest relations service includes pre-arrival arrangements, shoe polishing, packing and pressing services and in-room dining
- Fresh flowers

#### Location and size:

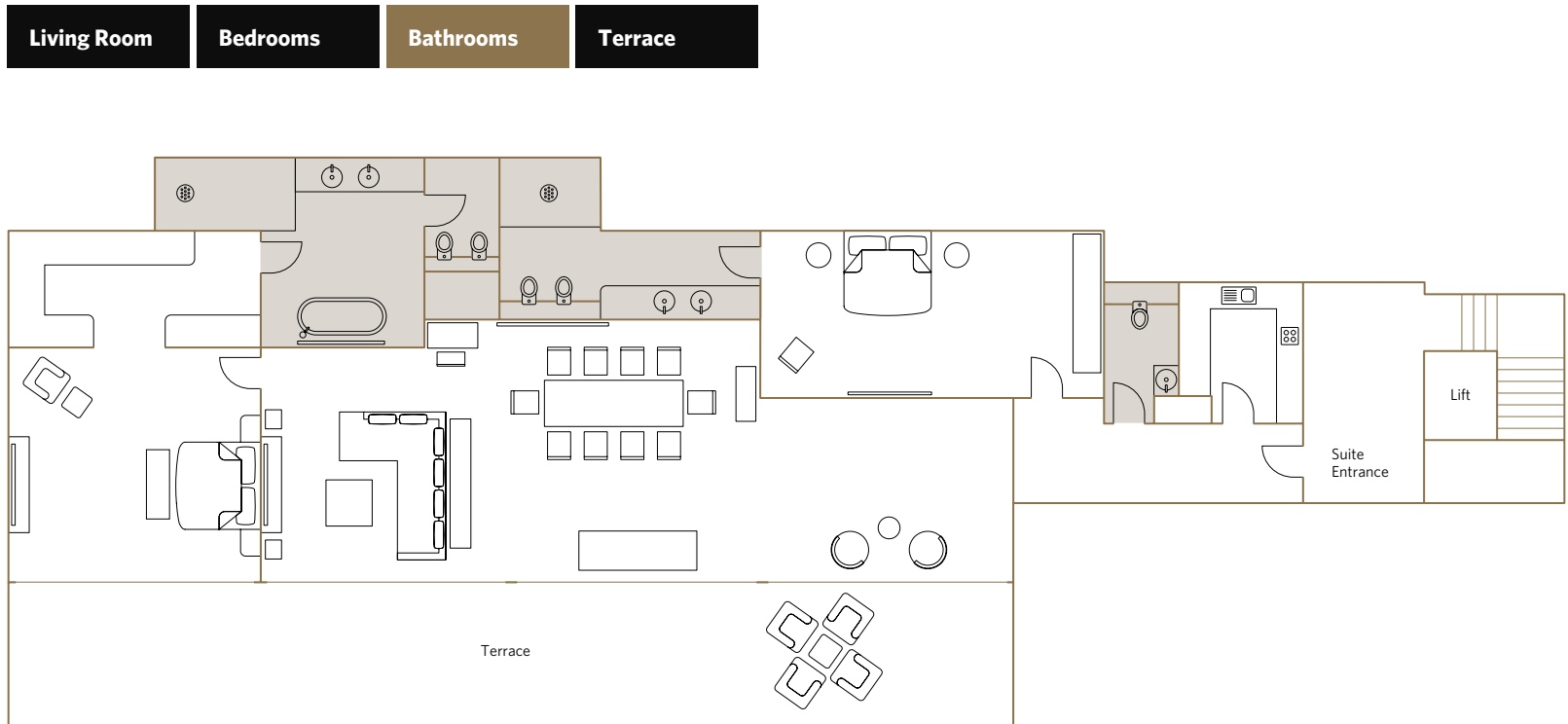
- Located on the 9<sup>th</sup> floor
- 199m<sup>2</sup>/2137.6 sq.ft



## THE PENTHOUSE SUITE

### FLOOR PLAN

#### WHERE TO FIND US



#### The Penthouse Suite offers:

- 100' x 8' decked terrace with panoramic views over London
- Master bedroom with double dressing room and king size double bed
- Bathroom with marble sarcophagus bath, LCD TV and illuminated rain shower
- Samsung plasma TV in lounge and both bedrooms with soundbar
- Dining area with full size ten-seat dining table
- Kitchen for entertaining
- Complimentary high speed Wi-Fi

#### Services included:

- 24-hour guest relations service includes pre-arrival arrangements, shoe polishing, packing and pressing services and in-room dining
- Fresh flowers

#### Location and size:

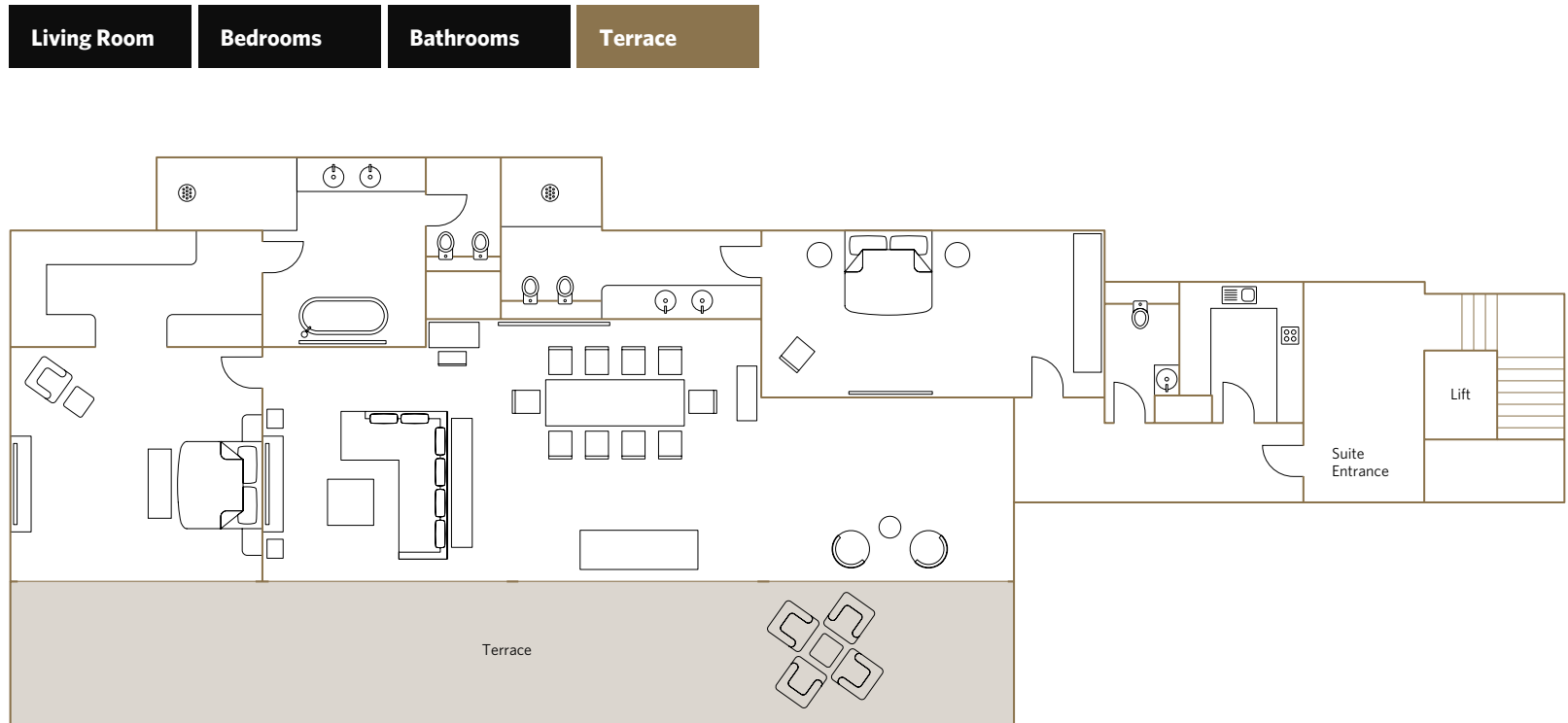
- Located on the 9<sup>th</sup> floor
- 199m<sup>2</sup>/2137.6 sq.ft



## THE PENTHOUSE SUITE

### FLOOR PLAN

#### WHERE TO FIND US



#### The Penthouse Suite offers:

- 100' x 8' decked terrace with panoramic views over London
- Master bedroom with double dressing room and king size double bed
- Bathroom with marble sarcophagus bath, LCD TV and illuminated rain shower
- Samsung plasma TV in lounge and both bedrooms with soundbar
- Dining area with full size ten-seat dining table
- Kitchen for entertaining
- Complimentary high speed Wi-Fi

#### Services included:

- 24-hour guest relations service includes pre-arrival arrangements, shoe polishing, packing and pressing services and in-room dining
- Fresh flowers

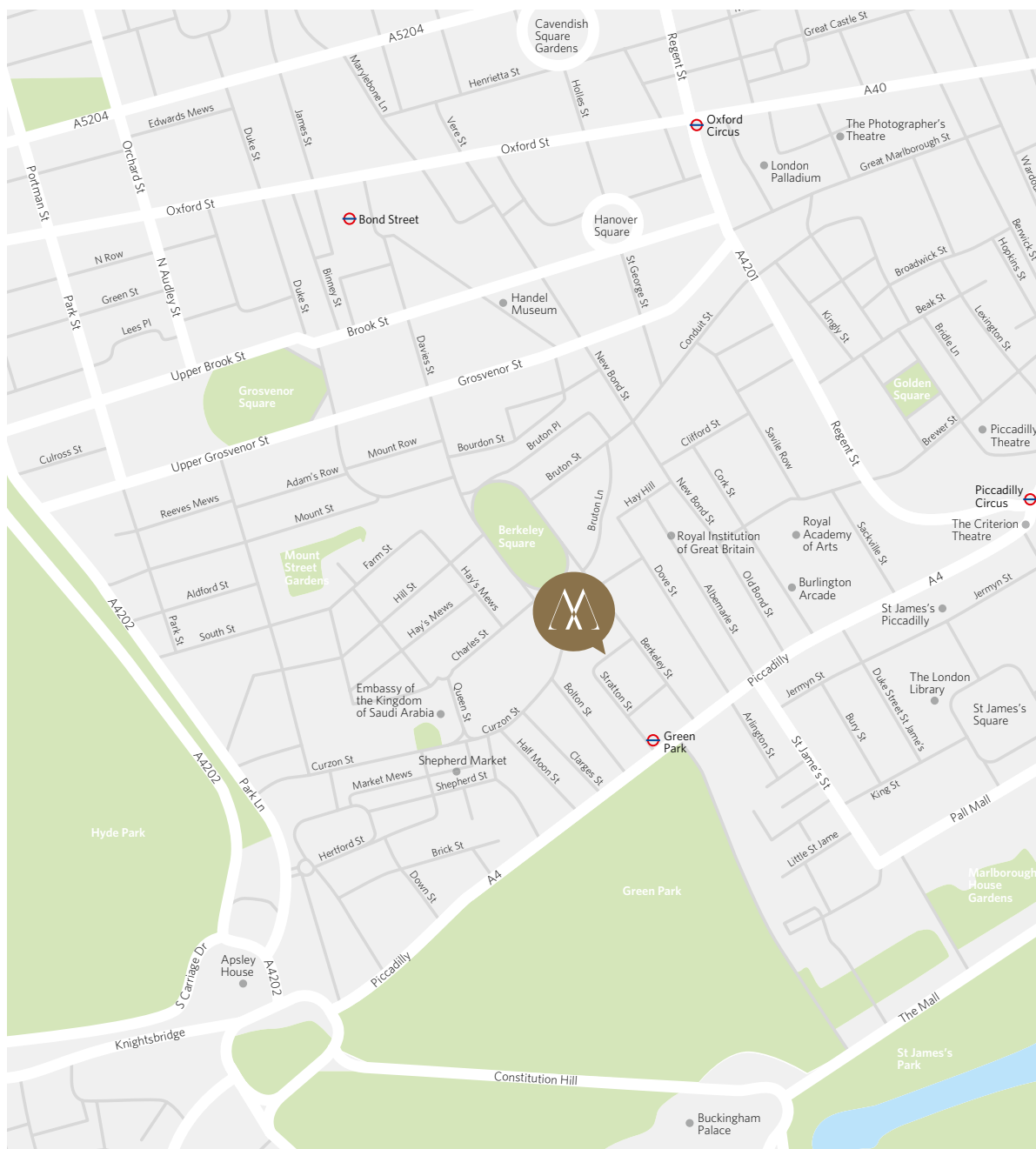
#### Location and size:

- Located on the 9<sup>th</sup> floor
- 199m<sup>2</sup>/2137.6 sq.ft





## WHERE TO FIND US



### Reservations

**T** +44(0)2077694041

**F** +44(0)2076291459

**E** [reservations@themayfairhotel.co.uk](mailto:reservations@themayfairhotel.co.uk)

### USA & Canada enquiries

**T** 1-8003333333

### Australia enquiries

**T** 1-8003333333

### Worldwide enquiries

**T** 0080033333333

### Contact Hotel Department

#### Hotel Main Switchboard

**T** +44 20 7629 7777

### Meetings, Weddings & Events

**T** +44 20 7915 3898

**F** +44 20 7409 7016

**E** [events@themayfairhotel.co.uk](mailto:events@themayfairhotel.co.uk)

### Corporate Sales

If you have a query about corporate rates please contact sales:

**T** +44 20 7769 4049

**E** [sales@themayfairhotel.co.uk](mailto:sales@themayfairhotel.co.uk)

### Underground

Green Park (Piccadilly, Victoria and Jubilee lines)

### Airports

City Airport (11 miles)

Heathrow (15 miles)

Gatwick (28 miles)

Luton (35 miles)

Stansted (37 miles)

### Car Park

Grosvenor Hill

### Train

Kings Cross St Pancras

### The May Fair Hotel ★★★★★

Stratton Street, London W1J 8LT

**T** +44 (0)20 7769 8201

**F** +44 (0)20 7493 0244

[reservations@themayfairhotel.co.uk](mailto:reservations@themayfairhotel.co.uk)

[themayfairhotel.co.uk](http://themayfairhotel.co.uk)





# THE PENTHOUSE SUITE