



# THE AMBER SUITE

[Click to enter](#)

## THE AMBER SUITE

### FLOOR PLAN

### WHERE TO FIND US



## THE AMBER SUITE

Empowering and sophisticated, The Amber Suite is superbly versatile. Radiant fabrics and a sweeping blonde wooden floor theme a magnificent space, which can enhance any stay in London with style and grandeur. The generous master bedroom pairs with optional connecting king and family rooms, allowing it to sleep up to 8 people. A kitchenette complements the airy chic dining space, making it ideal for elegant dinners and time to unwind.



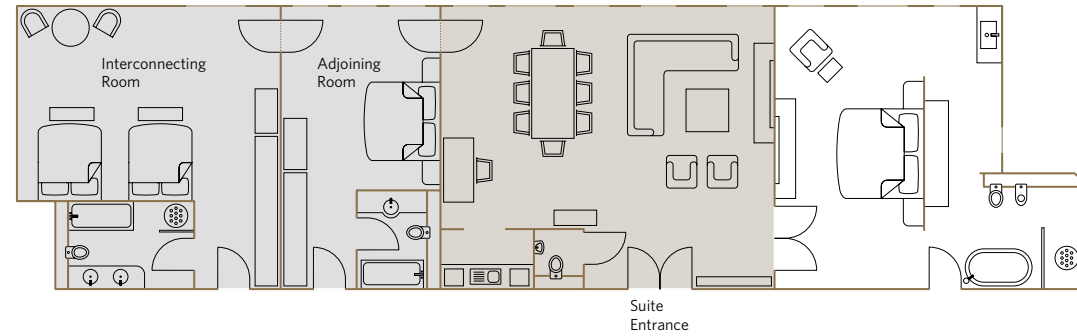


THE AMBER SUITE  
FLOOR PLAN  
WHERE TO FIND US

Living Room

Bedroom

Bathrooms



**The Amber Suite offers:**

- Bedroom with king size double bed
- Bathroom with freestanding bath, LCD TV and illuminated rain shower
- Lounge with remote-controlled integrated lighting and home cinema system
- Samsung plasma TV in lounge and bedroom with Sonos soundbar
- Dining area with full size eight-seat dining table
- Kitchen for entertaining
- Interconnecting and adjoining rooms available
- Complimentary high speed Wi-Fi

**Services included:**

- 24-hour guest relations service includes pre-arrival arrangements, shoe polishing, packing and pressing services and in-room dining.
- Fresh flowers

**Location and size:**

Located on the 4<sup>th</sup> floor  
116.88m<sup>2</sup>/1258.08sq.ft

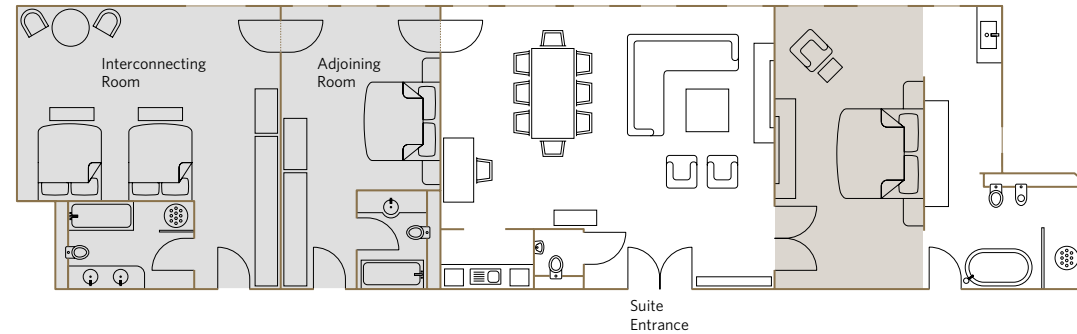


THE AMBER SUITE  
FLOOR PLAN  
WHERE TO FIND US

Living Room

Bedroom

Bathrooms



**The Amber Suite offers:**

- Bedroom with king size double bed
- Bathroom with freestanding bath, LCD TV and illuminated rain shower
- Lounge with remote-controlled integrated lighting and home cinema system
- Samsung plasma TV in lounge and bedroom with Sonos soundbar
- Dining area with full size eight-seat dining table
- Kitchen for entertaining
- Interconnecting and adjoining rooms available
- Complimentary high speed Wi-Fi

**Services included:**

- 24-hour guest relations service includes pre-arrival arrangements, shoe polishing, packing and pressing services and in-room dining.
- Fresh flowers

**Location and size:**

Located on the 4<sup>th</sup> floor  
116.88m<sup>2</sup>/1258.08sq.ft

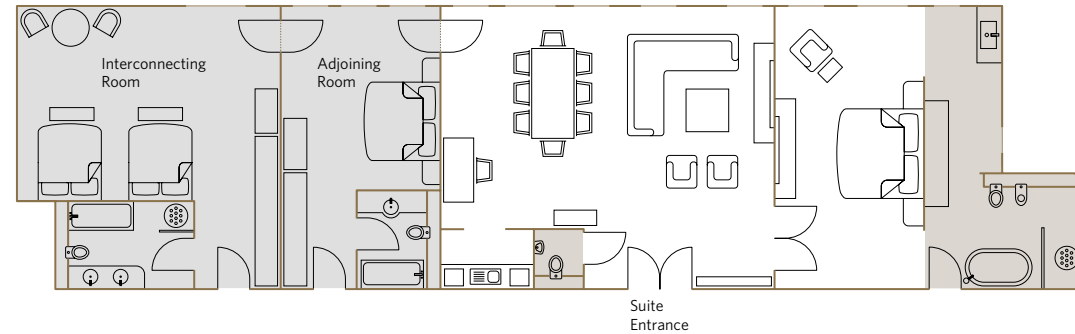


**THE AMBER SUITE**  
**FLOOR PLAN**  
 WHERE TO FIND US

Living Room

Bedroom

Bathrooms



**The Amber Suite offers:**

- Bedroom with king size double bed
- Bathroom with freestanding bath, LCD TV and illuminated rain shower
- Lounge with remote-controlled integrated lighting and home cinema system
- Samsung plasma TV in lounge and bedroom with Sonos soundbar
- Dining area with full size eight-seat dining table
- Kitchen for entertaining
- Interconnecting and adjoining rooms available
- Complimentary high speed Wi-Fi

**Services included:**

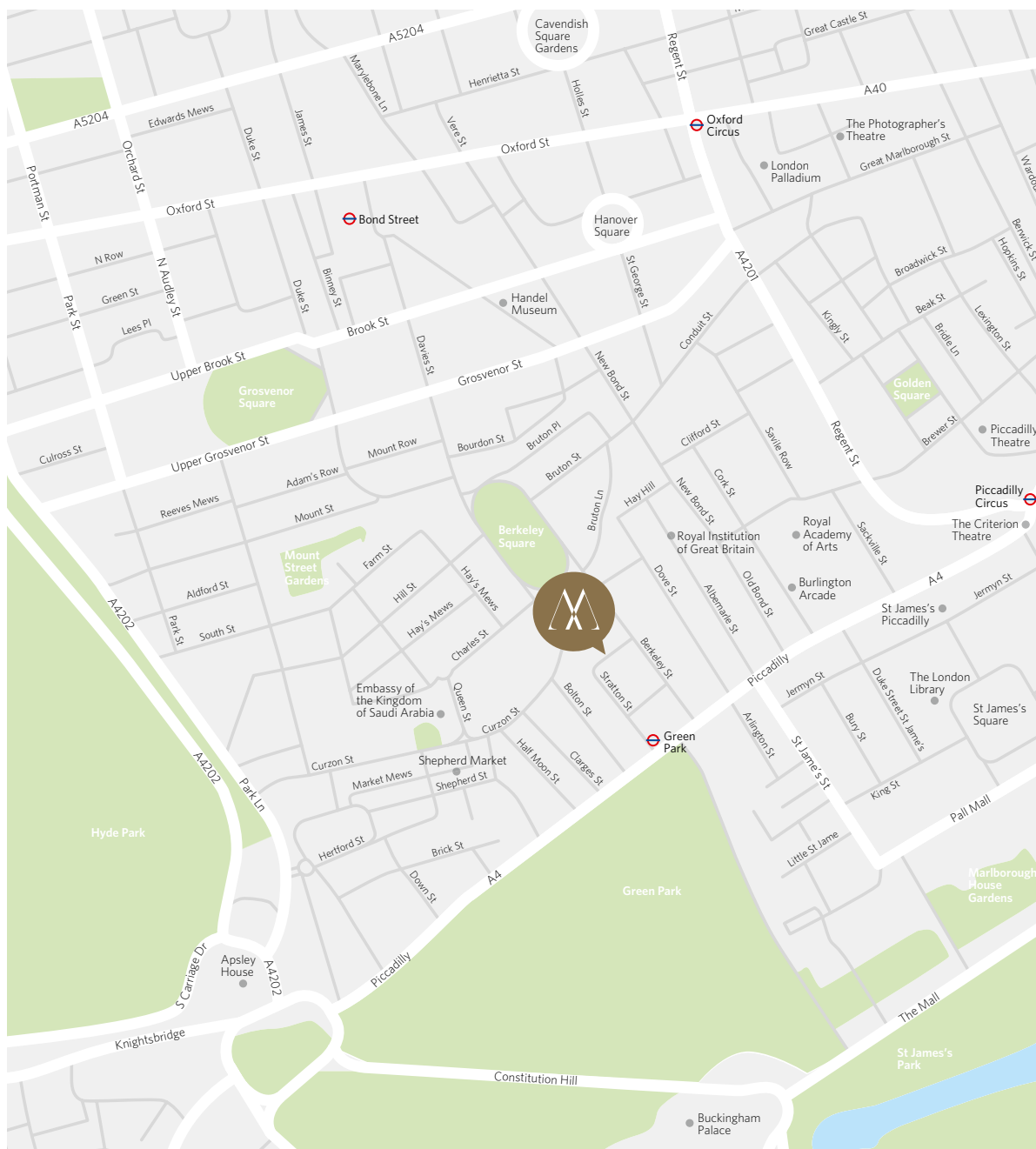
- 24-hour guest relations service includes pre-arrival arrangements, shoe polishing, packing and pressing services and in-room dining.
- Fresh flowers

**Location and size:**

Located on the 4<sup>th</sup> floor  
 116.88m<sup>2</sup>/1258.08sq.ft



## WHERE TO FIND US



### Reservations

**T** +44(0)2077694041

**F** +44(0)2076291459

**E** [reservations@themayfairhotel.co.uk](mailto:reservations@themayfairhotel.co.uk)

### USA & Canada enquiries

**T** 1-8003333333

### Australia enquiries

**T** 1-8003333333

### Worldwide enquiries

**T** 0080033333333

### Contact Hotel Department

#### Hotel Main Switchboard

**T** +44 20 7629 7777

### Meetings, Weddings & Events

**T** +44 20 7915 3898

**F** +44 20 7409 7016

**E** [events@themayfairhotel.co.uk](mailto:events@themayfairhotel.co.uk)

### Corporate Sales

If you have a query about corporate rates please contact sales:

**T** +44 20 7769 4049

**E** [sales@themayfairhotel.co.uk](mailto:sales@themayfairhotel.co.uk)

### Underground

Green Park (Piccadilly, Victoria and Jubilee lines)

### Airports

City Airport (11 miles)

Heathrow (15 miles)

Gatwick (28 miles)

Luton (35 miles)

Stansted (37 miles)

### Car Park

Grosvenor Hill

### Train

Kings Cross St Pancras

### The May Fair Hotel ★★★★★

Stratton Street, London W1J 8LT

**T** +44 (0)20 7769 8201

**F** +44 (0)20 7493 0244

[reservations@themayfairhotel.co.uk](mailto:reservations@themayfairhotel.co.uk)

[themayfairhotel.co.uk](http://themayfairhotel.co.uk)





# THE AMBER SUITE